



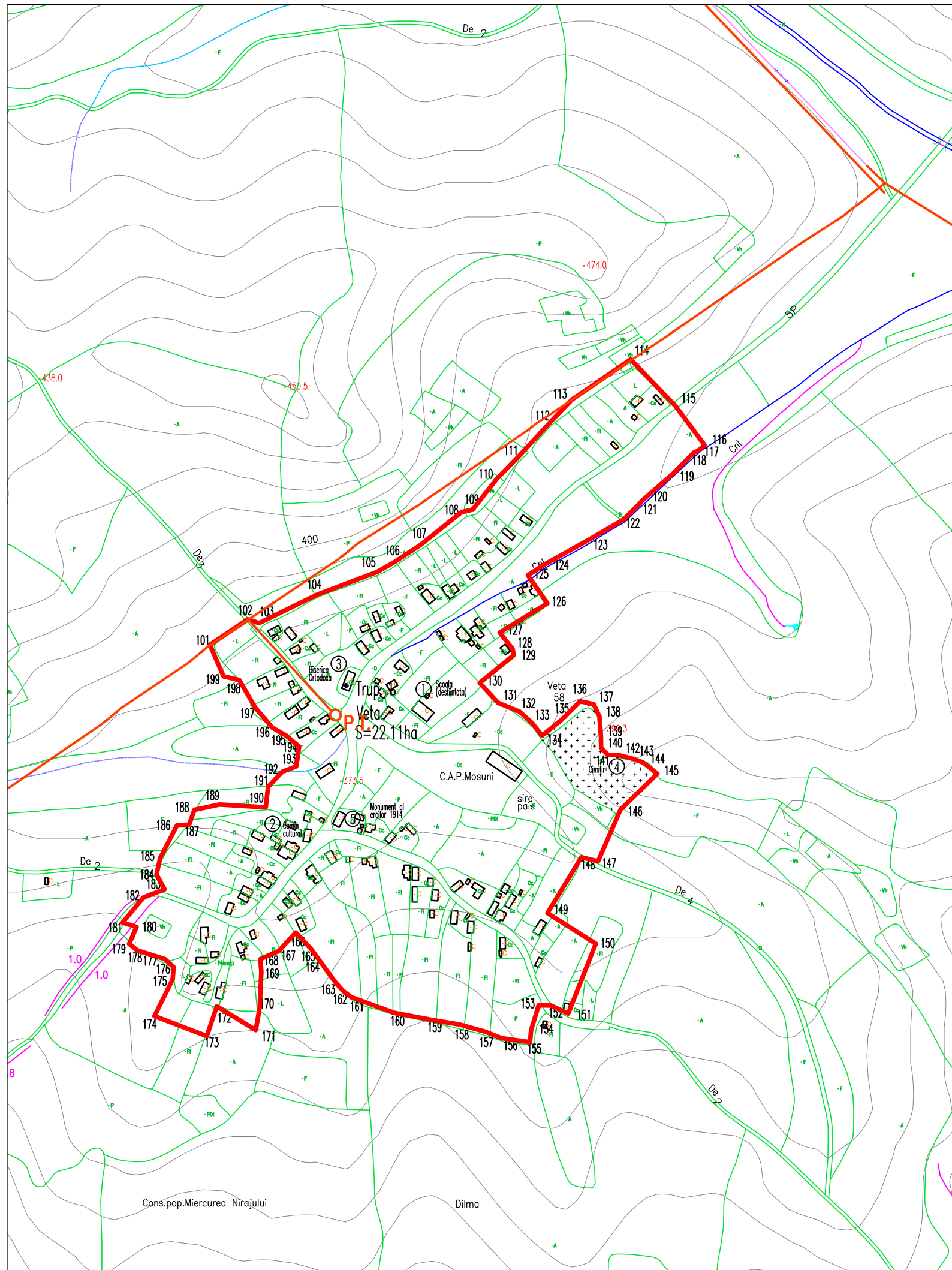
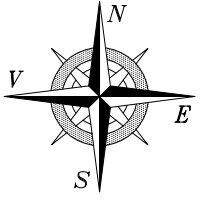


PLAN URBANISTIC GENERAL

VETA


LEGENDĂ:

-  LIMITA TERITORIULUI ADMINISTRATIV
-  LIMITA INTRAVILANULUI PROPUȘ
-  LEA 20KV – ELECTRICA S.A.
-  P.T. POST TRAFU



DOTĂRI:

1. ȘCOALA (DESFIINTATA)
2. CAMIN CULTURAL
3. BISERICA ORTODOXA
4. CIMITIR
5. MONUMENT AL EROILOR 1914

 BIRU DE ARHITECTURA SI URBANISM TIRGU MURES – J26–728–1994	sef proiect	arch. Octavian LIPOVAN	
	proiectat	–	
	desenat	ing. Aurora COVACI	
	verificat	arch. WINKLER Eniko	
BENEFICIAR: PRIMARIA LOC. MIERCUREA NIRAJULUI JUDETUL MURES			FAZA: PUG
TITLU PLAN URBANISTIC GENERAL		DATA: iunie 2009	NR.PROIECT: 54.02
PROIECT: SAT: VETA		SCARA: 1:5000	NR.PLANSA : A 06.1
TITLU REGLEMENTARI EDILITARE			
PLANSA:			

ACEȘT PROIECT ESTE PROPRIETATEA INTELECTUALA A ȘC ARHIGRAF SRL. UTILIZAREA LUI INTRA SUB INCIDENTIA LEGII DREPTULUI DE AUTOR.